

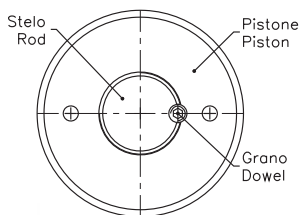
EPF...C

PISTONE FILETTATO CON CENTRAGGIO THREADED PISTON WITH SPIGOT/CENTERING

- MATERIALE Acciaio AVP (9 SMn Pb 28)
- MATERIAL Steel AVP (9 SMn Pb 28)



SIGLA CODE	Q.TÀ MINIMA (E/O MULTIPLI) MINIMUM Q.TY (AND/OR MULTIPLES)	Ø A	B	C	D	Ø E	PESO WEIGHT kg.
EPF 040018036 C	10 pz/pcs	40	M 18x1.5	36	23	20	0,17
EPF 050018040 C	9 pz/pcs	50	M 18x1.5	40	25	25	0,30
EPF 060024045 C	8 pz/pcs	60	M 24x2	45	32	30	0,56
EPF 060024452 C	8 pz/pcs	60	M 24x2	45	32	25	0,50
EPF 070024045 C	8 pz/pcs	70	M 24x2	45	30	25	0,80
EPF 070027050 C	7 pz/pcs	70	M 27x2	50	35	30	0,85
EPF 080027045 C	8 pz/pcs	80	M 27x2	45	30	28	1,00
EPF 080027050 C	7 pz/pcs	80	M 27x2	50	35	28	1,00
EPF 090027050 C	7 pz/pcs	90	M 27x2	50	35	28	1,24
EPF 090033050 C	7 pz/pcs	90	M 33x2	50	35	35	1,30
EPF 100033050 C	7 pz/pcs	100	M 33x2	50	35	35	1,96

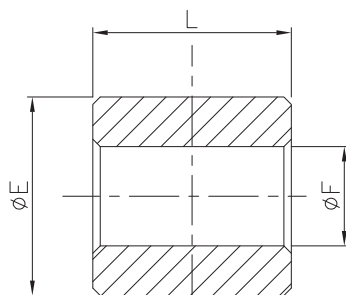


- È consigliabile bloccare il pistone filettato con un grano M6 tra pistone e stelo, utilizzando un'adesivo frenafilletto tipo Loctite (vedi figura)
- It is suggested to lock the threaded piston by means of a security dowel M6 between the piston and the rod, using a threadlocking adhesive, like Loctite's one. (see picture)

BS...

BOCCOLE A SALDARE WELDING BUSHES

- MATERIALE Acciaio FE510C (9SMn28)
- MATERIAL Steel FE510C (9SMn28)



SIGLA CODE	Ø F	Ø E	L	PESO WEIGHT kg.
BS163530	16,25	35	30	0,18
BS163560	16,25	35	60	0,36
BS204040	20,25	40	40	0,29
BS204070	20,25	40	70	0,50
BS255050	25,25	50	50	0,56
BS255080	25,25	50	80	0,89
BS255090	25,25	50	90	1,02
BS306060	30,25	60	60	0,97
BS3060110	30,25	60	110	1,79
BS407070	40,25	70	70	1,60
BS4070130	40,25	70	130	2,65